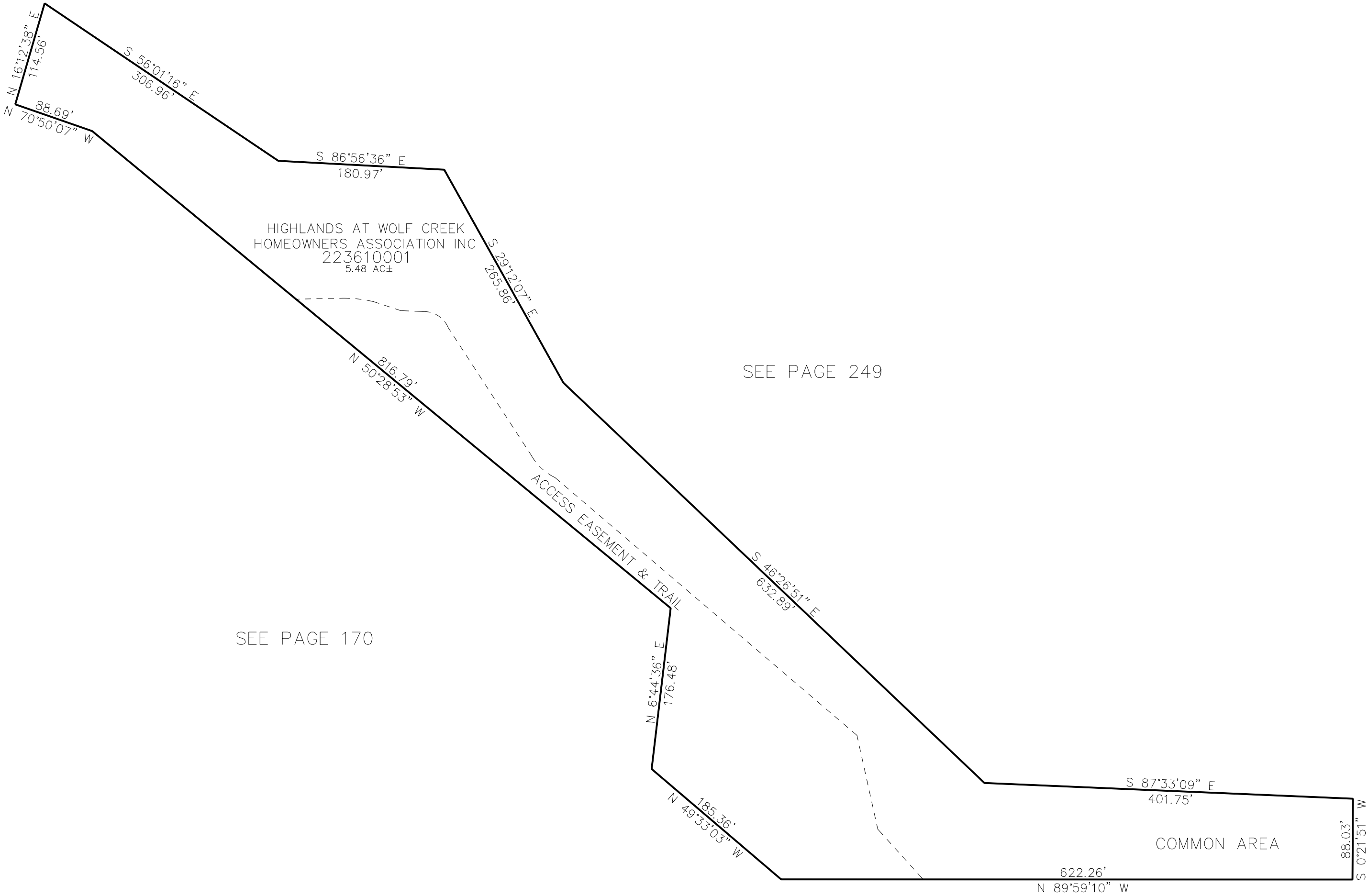


PART OF THE SW. 1/4, OF SECTION 23, T.7N., R.1E., S.L.B. & M.
THE HIGHLANDS AT WOLF CREEK PHASE 8 1ST AMENDMENT

IN WEBER COUNTY
SCALE 1" = 100'

TAXING UNIT: 203

SEE PAGE 206



SEE PAGE 249

SEE PAGE 170

SEE PAGE 20

10' UTILITY & DRAINAGE EASEMENTS EACH
SIDE OF PROPERTY LINES AS INDICATED
BY DASHED LINES EXCEPT AS OTHERWISE
SHOWN.

FOR COMPLETE ENG DATA SEE
ORIGINAL DEDICATION PLAT IN
BOOK 84, PAGE 69 OF RECORDS.